

MAGIK  THEATRE

eddie & vinnie



MAGIK THEATRE
ON THE ROAD!

DIGITAL RESOURCE GUIDE




EDDIE & VINNIE IS
SPONSORED BY:

ArchPoint®

By Jenny Millinger



TABLE OF CONTENTS

- **Introduction to the Play**..... Page 1
- **Meet the Cast**..... Page 2
- **Dissecting Dyslexia**..... Page 3 
- **Your Strength Box!**..... Pages 4-5 
- **Tricky Tessellations**..... Pages 6-7 
- **Discussion Questions**..... Page 8
- **Ways to Stay Connected**..... Page 9
- **TEKS Charts**.....Pages 10-11

SHOW SYNOPSIS



The people who made this production possible.

CAST

Eddie: Venny Mortimer

Vinnie: Myles Harris

Penelope: Dani Gonzales

CREATIVE TEAM

Playwright: Jenny Millinger

Director: Devon Moreno

Set Designer: Holly Windingstad

Costume Designer: Holly Windingstad

Sound Designer: John Michael Hoke

PRODUCTION TEAM

Artistic Director: Anthony Runfola

Production Manager: Devon Moreno

Tour Stage Manager: Bri Cuellar

Technical Director: Pat Smith

Assistant Technical Director: Chris Boneta

Properties Manager: Lucian Hernandez

Audio Engineer: Zachary Walsh

Lighting Supervisor: Thaddeus Morris

Costume Shop Manager: Sarah Steele

ABOUT EDDIE & VINNIE!

By Jenny Millinger.

Commissioned by Magik Theatre.

At its heart, *Eddie & Vinnie* is a buddy comedy about Eddie, a young boy with dyslexia, and his best friend/trusty sidekick, a quick-witted gecko named Vinnie. Eddie struggles with his schoolwork and faces the possibility of going to summer school if he can't get his grades up. In a last-ditch effort to get on the honor roll, Eddie teams up with the overly helpful new girl in class to write their end-of-year report. It seems like Vinnie is always there to distract him or, is she really challenging him to lean into his uniquely beautiful mind?

Sponsored by [Archpoint](#).



MEET THE CAST



Meet the cast that is bringing the story of *Lyric & the Keys* to life on the Magik Theatre stage!



Venny Mortimer
Eddie



Myles Harris
Vinnie

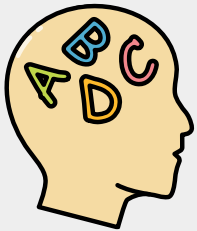


Dani Gonzales
Penelope

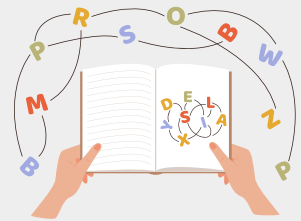


DISSECTING DYSLEXIA

In our show, Eddie has dyslexia. **Dyslexia** is a very common learning disability that makes it harder for people to process words or numbers. Watch the following video to answer the questions in the template below!



https://www.youtube.com/watch?v=q2dbtA_NXpc



1. What may students with dyslexia find hard to learn?

2. Does every student with dyslexia learn in the same way?
Explain your answer.

3. How might dyslexia present itself?

4. How common is dyslexia?

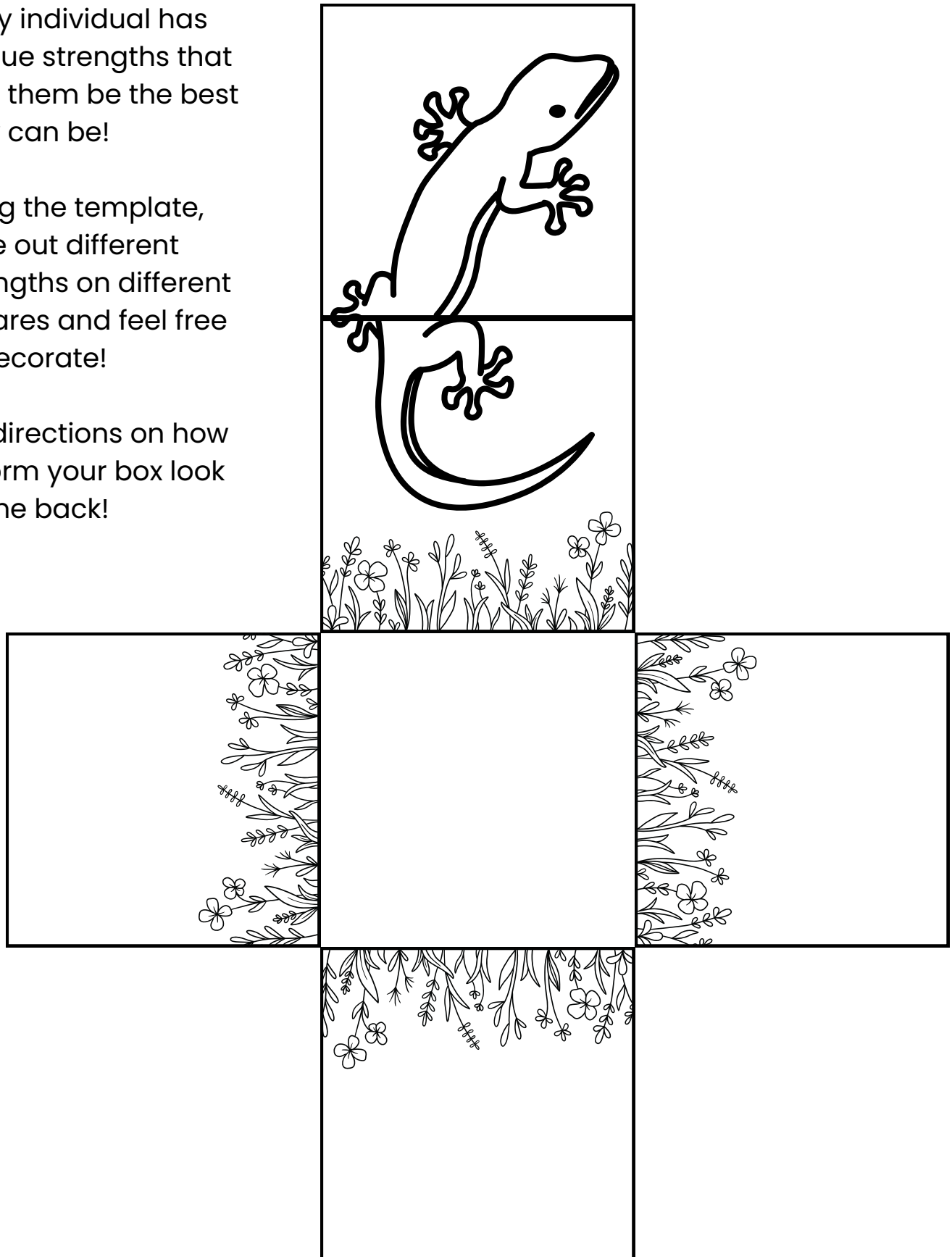
5. Can someone with dyslexia learn how to read and spell?

YOUR STRENGTH BOX!

Every individual has unique strengths that help them be the best they can be!

Using the template, write out different strengths on different squares and feel free to decorate!

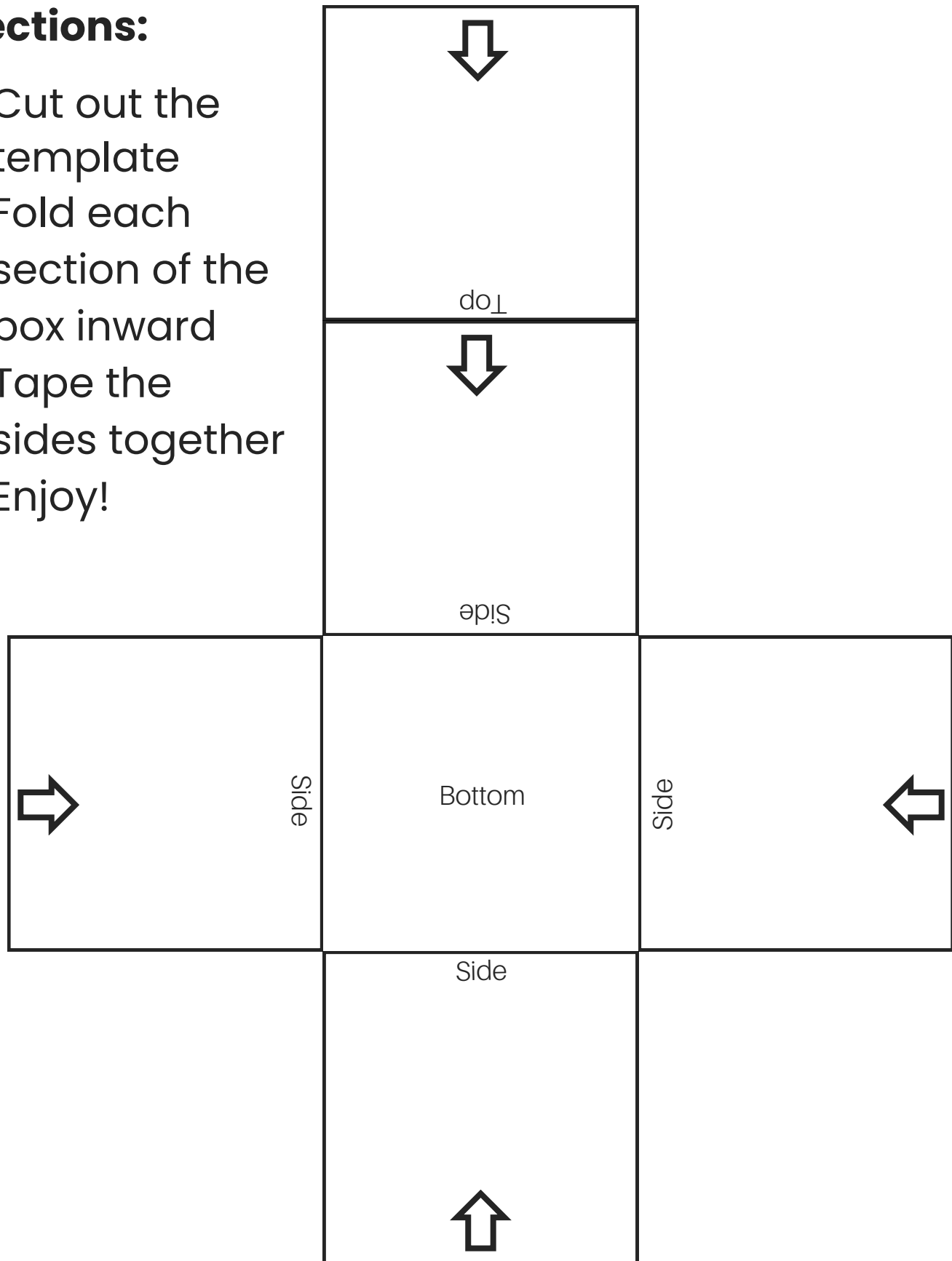
For directions on how to form your box look on the back!



YOUR STRENGTH BOX!

Directions:

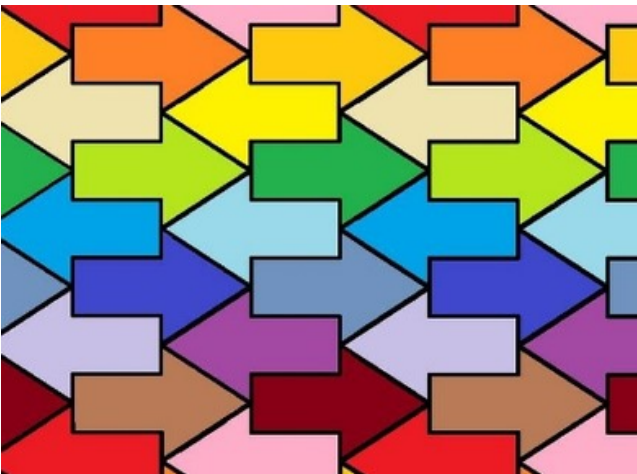
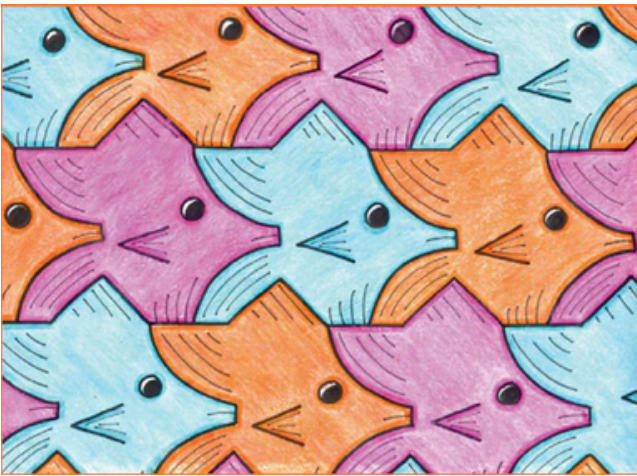
1. Cut out the template
2. Fold each section of the box inward
3. Tape the sides together
4. Enjoy!



TRICKY TESSELLATIONS

In the show, Eddie and Vinnie create what is known as a tessellation. A **tessellation** is a pattern of one shape that fits all together. Use the template in the next page to create your own tessellation with a group of friends!

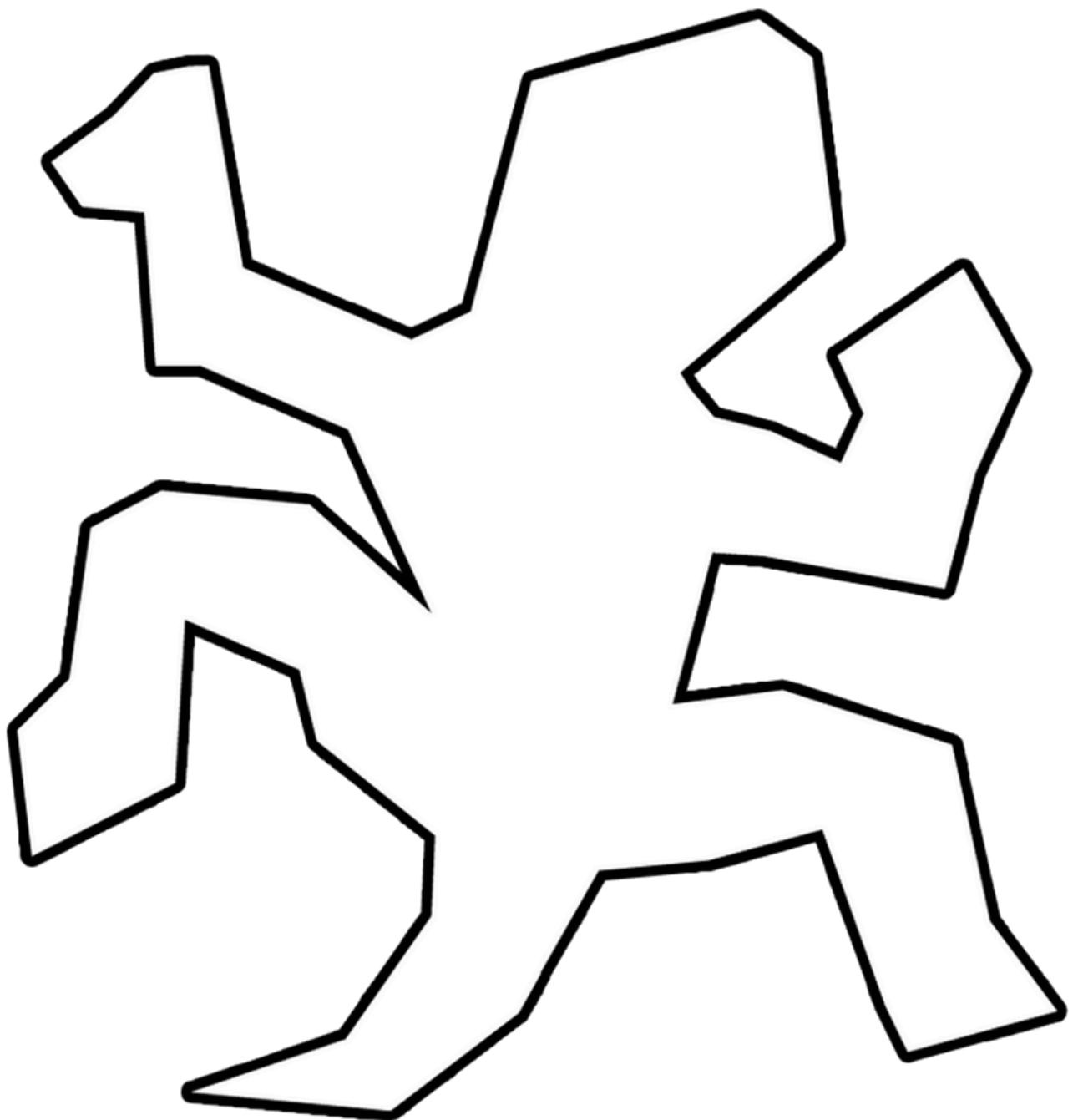
EXAMPLES OF TESSELLATIONS



Extension Activity: Let's talk about it! With a classmate, friend, or family member, share what you think is the importance of differing perspectives and how sometimes something can seem negative but really isn't. Examples of this may include, summer school, tutoring, feeling sad, losing a game, or being different from others.

VINNIE THE GECKO

Using the template below, create your own teselation with a group of friends!
Decorate your design before cutting it out and adhering it to the designs of the
rest of your group.



DISCUSSION QUESTIONS



A Q+A or brief discussion will take place immediately following the performance.

At the end of the show, the cast will have some time to ask the audience a couple of questions to the audience about the show. They may also have time to answer a few questions from the audience too!

Some questions you may hear are...

- Eddie is a person who has dyslexia and this adds to the struggle of learning something new. **What have you learned about dyslexia? Have you ever had a challenge learning something new before?**
- Challenges might bring up all sorts of feelings, and just like in our show, Eddie and Penn both learn to lean into their strengths. Take a moment to think about something you excel at. **What are some of your strengths?**
- Empathy is the ability to practice and share the feelings of others. And it is through empathy that we are able to practice understanding others. **What are ways you show care for yourself, and for others?**



Our actors, unfortunately, aren't able to answer everyone's questions but if you have questions you'd like to ask about the show, like how or why we did something, feel free to write us a letter or draw us a picture. We always do our best to write back!

Our Address is: 420 S. Alamo Street, San Antonio, Texas, 78205

WAYS TO STAY CONNECTED!

Magik Theatre's mission is to create theatrical experiences that ignite imagination, spark curiosity, inspire empathy, and foster a lifetime love of learning in young people.

HOW TO BOOK A TOUR SHOW OR WORKSHOP AT YOUR SCHOOL:

Email info@magiktheatre.org or call (210) 227-2751.

Bring the magic of the theatre into your classroom by signing up for a cross-curricular creative drama workshop! *Eddie & Vinnie* workshops are available throughout the school day Monday to Friday, from October through December 2024. Each workshop runs 45 minutes to 1 hour. All workshops can be booked as an add-on to booking a field trip, tour, or independently.

Learn more at magiktheatre.org or scan the QR code!



Support us through the State Employee and Charitable Campaign and the Local Employee Charitable Campaign by United Way of Bexar County.

8058 Magik Theatre (local)
413031 Magik Theatre (state)

Office Hours

Monday - Friday
9 am - 5 pm

Magik Theatre
420 S Alamo St
San Antonio, TX 78205

TEKS REFERENCES:

<https://tea.texas.gov/academics/curriculum-standards/teks/texas-essential-knowledge-and-skills>

Stay connected with the latest!
Follow us on our social media

ADDITIONAL RESOURCES:

<https://celebratedyslexia.org/>



@themagiktheatre



TEKS & INTEGRATION CHARTS

Activity Name: Dissecting Dyslexia (pg. 3)

TEKS:

	ELA	Other
1st	1.(A), 6.(H-I), 7.(E), 9.(C)	3.(A-C)
2nd	1.(A), 6.(H-I), 7.(E), 9.(C)	3.(A-C)
3rd	1.(A), 6.(H-I), 7.(E), 9.(C)	3.(B-C)
4th	1.(A), 6.(H-I), 7.(E)	3.(B-C)
5th	1.(A), 6.(H-I), 7.(E)	3.(B-C)

Activity Name: Your Strength Box! (pg. 4-5)

TEKS:

	ELA	Art	Other
1st	1.(A), 7.(E)	2.(B), 4.(C)	3.(A-C)
2nd	1.(A), 7.(E)	2.(B), 4.(C)	3.(A-C)
3rd	1.(A), 7.(E)	2.(B), 4.(C)	3.(B-C)
4th	1.(A), 7.(E)	2.(B), 4.(C)	3.(B-C)
5th	1.(A), 7.(E)	2.(B), 4.(C)	3.(B-C)

TEKS & INTEGRATION CHARTS

Activity Name: Tricky Tessellations (pg. 6-7)

TEKS:

	Art	Other
1st	2.(B), 4.(C)	3.(A-C)
2nd	2.(B), 4.(C)	3.(A-C)
3rd	2.(B), 4.(C)	3.(B-C)
4th	2.(B), 4.(C)	3.(B-C)
5th	2.(B), 4.(C)	3.(B-C)

If you enjoyed this Digital Resource Guide, please [**click here**](#) to complete our survey regarding this educational resource or scan the QR code. We appreciate your time and feedback as we aim to be aware of opportunities to enhance our services and better serve our community.



EDDIE & VINNIE IS SPONSORED BY:

ArchPoint®